

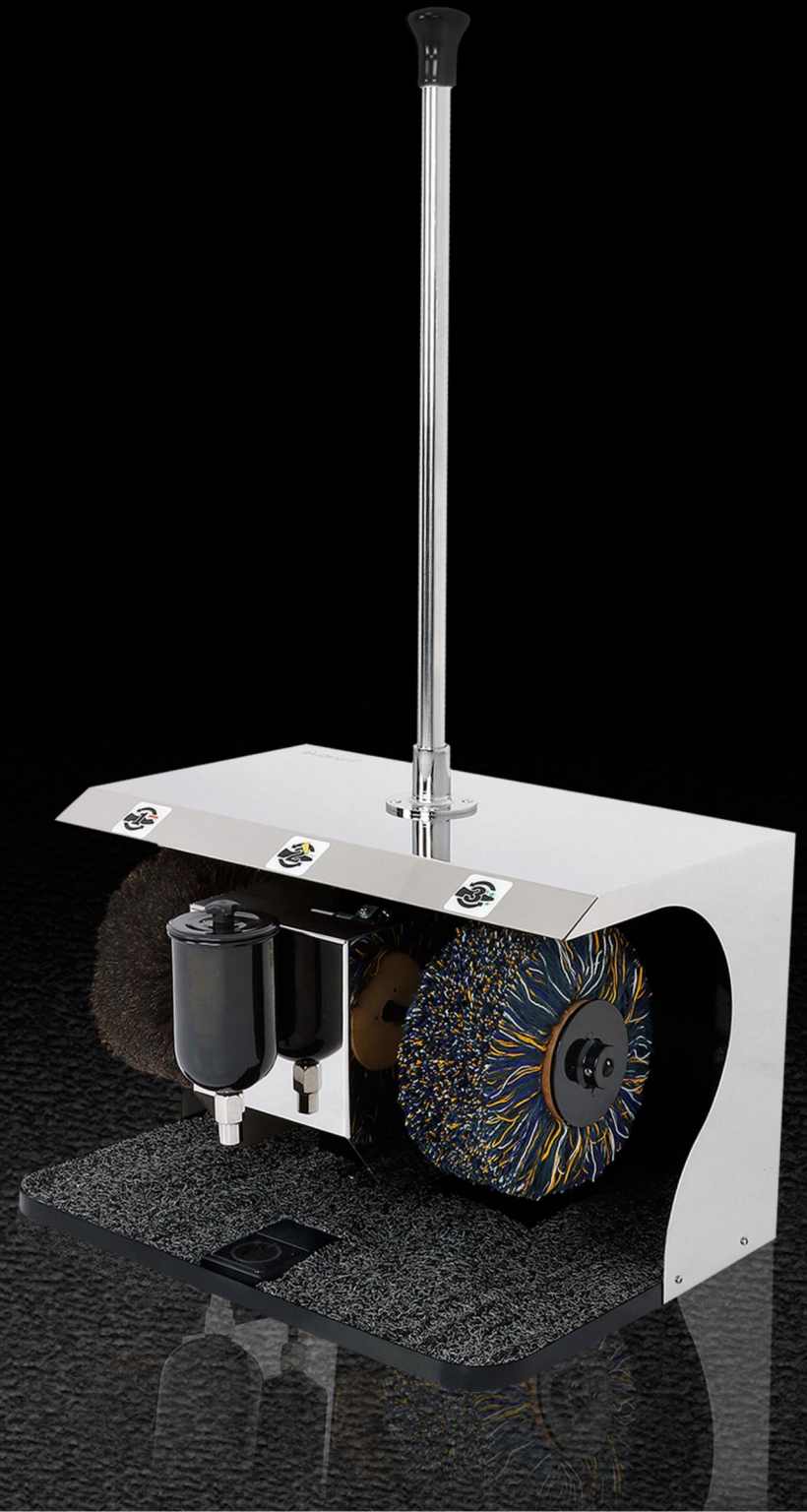
*The Rolls Royce
of Shoe shine machines*



Huge brushes with extra large hair size, giving a deep clean effect



Brushes made up of 100% pure, natural horse hair & cotton yarns, furnishing a premium shine with no harm to leather surfaces

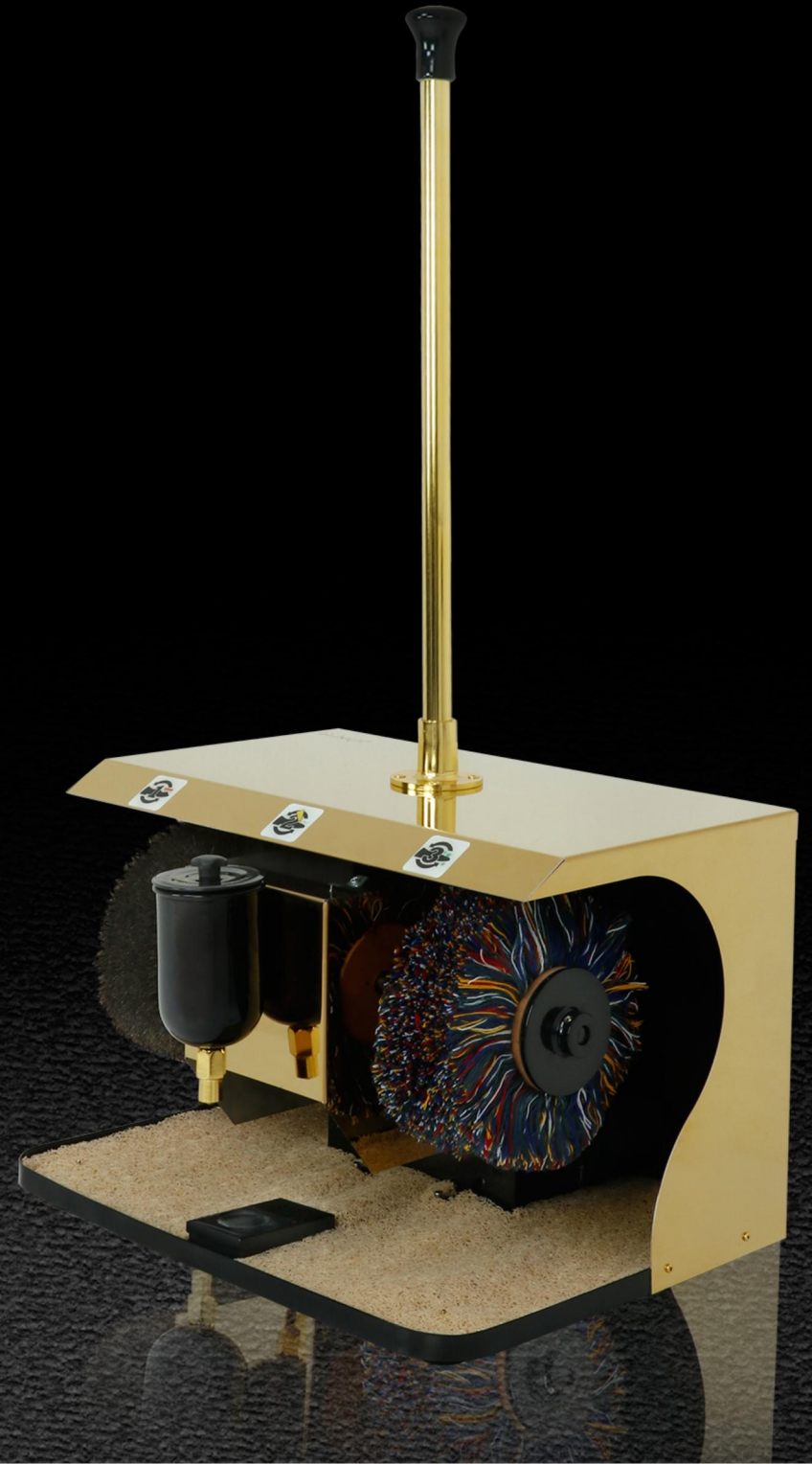




Roomy foot space for efficient shoe polishing while leaving no areas untouched.



Extremely powerful motor, never stops while you apply force





Large capacity polish bottle avoids frequent fill-ups



Ergonomic rest bar gives that extra comfort while operating

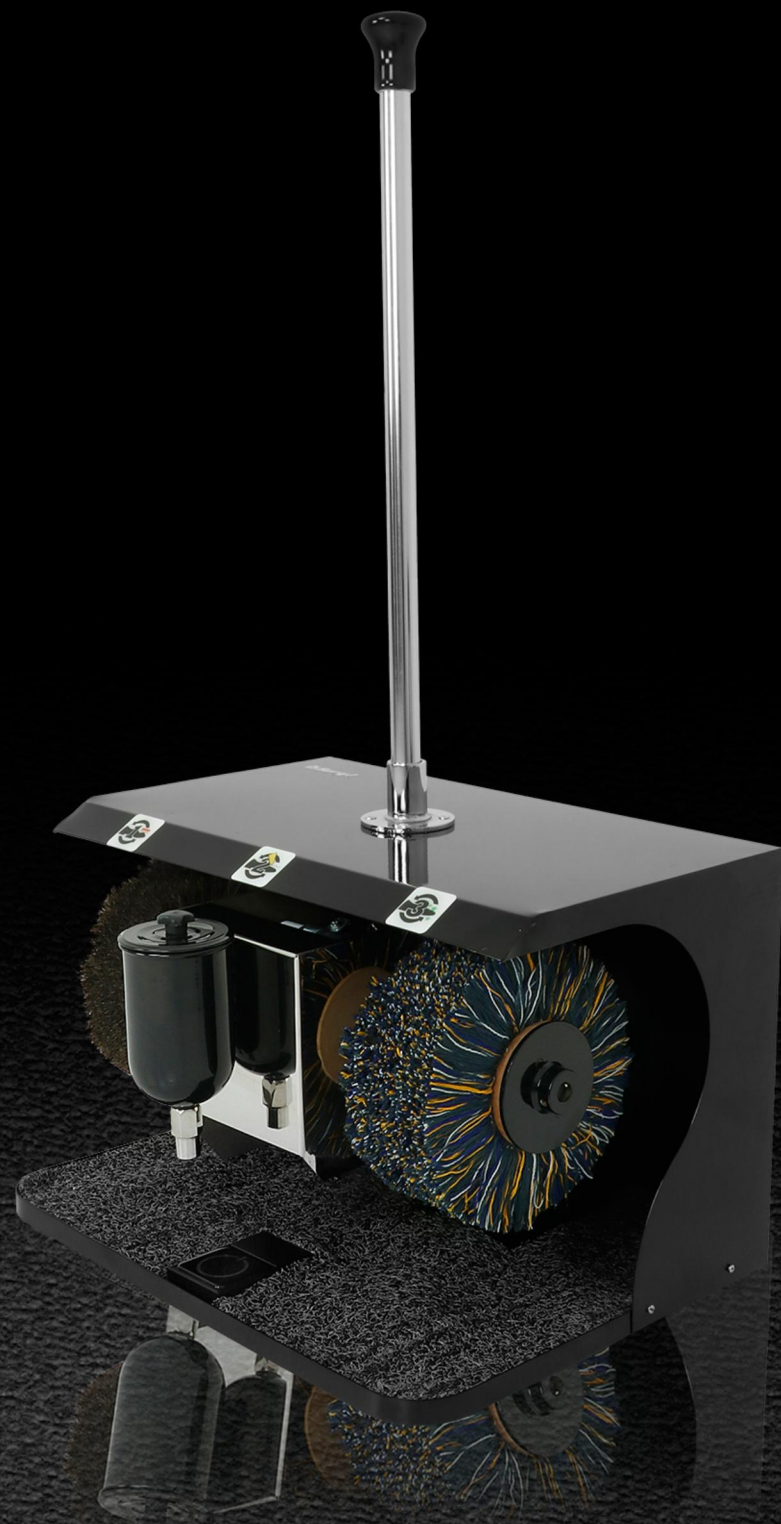




Most fancy yet sturdy metallic enclosures delivering longer durability



Extended 02 years warranty for peaceful possession



Technical Specifications

Model NO. NS-21

Dimensions: 56 CM(L) X 40 CM (W) X 99 CM (H) (With Rest Bar)

Weight: 31 kg

Housing: Metal sheet

Motor Specifications

Revolution

900

RPM

Power

180

Watt

Polishing Time

90

Seconds

Beryl Technologies

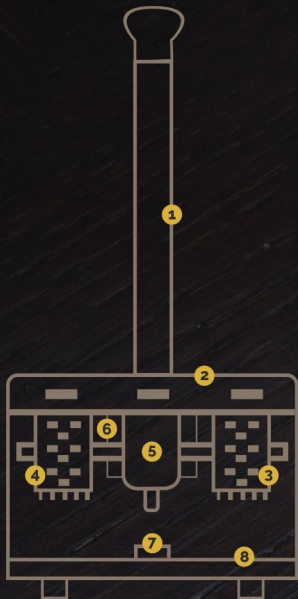
Beryl Technologies is India's first luxury shoe shine machine developers. Company is disrupting the way Automated shoe shine market has been operating.

We believe that there is a growing need for high quality yet affordable automation solutions in the developing markets of the world and we focus on providing such solutions in these markets.

B-23, Somdutt chambers-II,
Bhikaji cama place,
New Delhi-110066

+91-9773857910 / +91-9793692472

info@beryl.org.in



Machine Parts

- 1 Stainless steel Vertical Handle of 02 Feet with a PVC Knob at top.
- 2 Steel body with glossy/ matt/metallic/wooden finish.
- 3 One Big Pure Cotton yarn brushes (21cm(Diameter) * 10cm (Width))
- 4 One Big Pure Horse Hair brush (21cm(Diameter) * 10cm (Width))
- 5 Metal Shoe Polish dispenser 500ml with Stainless steel valve.
- 6 Copper wiring ball bearing motor with wire plug
- 7 Unique Contact Sensor (Foot Switch)
- 8 Rubber foot mat